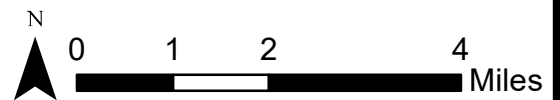




Boundaries are approximate and not meant to be absolute.

Map Source: World Street Map



Sunset Beach Office &
Maintenance Facility
Brunswick County, NC

June 2024
P.ENV0001888



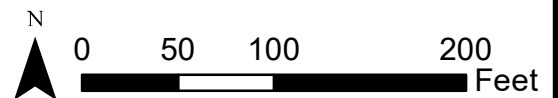
3805 Wrightsville Avenue
Wilmington, NC 28403
(910) 452-0001

Figure 1.
Vicinity Map



Boundaries are approximate and not meant to be absolute.

Map Source: NC OneMap 2020 Aerial Photo



Sunset Beach Office &
Maintenance Facility
Brunswick County, NC

June 2024
P.ENV0001888

DAVEY 
Resource Group

3805 Wrightsville Avenue
Wilmington, NC 28403
(910) 452-0001

Figure 4.
2020 Aerial Photo

PARCEL#: 227N000102
 OWNER: CHATHAM GLENN POA INC
 605 BRIARWOOD DR. STE C
 MYRTLE BEACH, SC 29572
 ZONING: CO-CLD
 USE: AMENITY AREA

PARCEL#: 2270002308
 OWNER: DUCK POND VENTURES LLC
 5430 WADE PARK BLVD
 RALEIGH, NC 27607
 ZONING: CO-CLD
 USE: VACANT

PARCEL#: 2270002301
 OWNER: LENNAR CAROLINAS LLC
 1941 SAVAGE RD
 CHARLESTON SC 29407
 ZONING: CO-CLD
 USE: VACANT

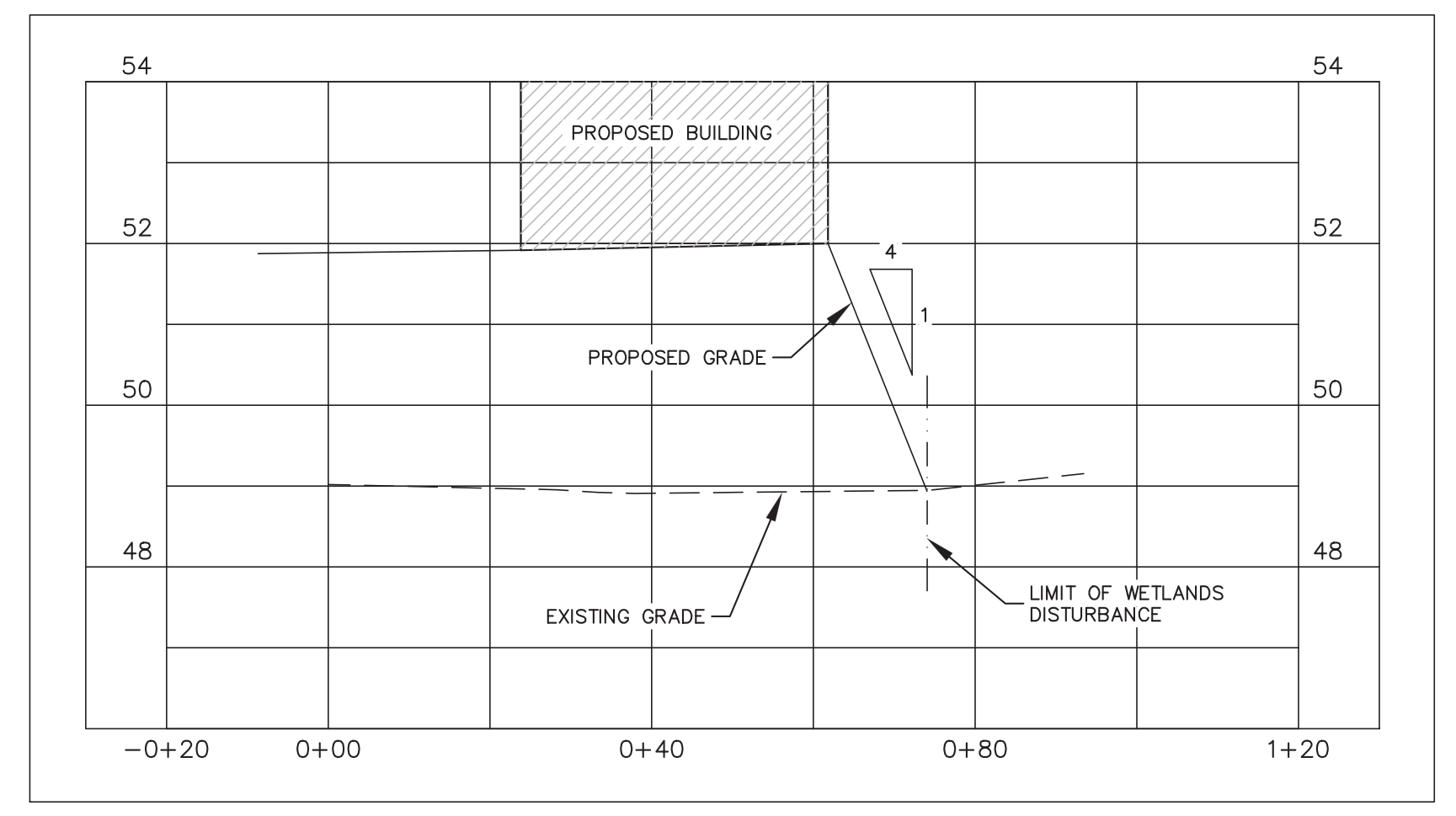
PARCEL#: 2270002307
 OWNER: CD OCEAN ISLE LLC
 1220 LAVADA PL.
 GREENTWOOD, TN 37207
 ZONING: CO-CLD
 USE: COMMERCIAL RETAIL

LINE	BEARING	DISTANCE
W1	N63° 41' 26.89"W	44.05
W2	S71° 46' 33.44"W	52.04
W3	N89° 29' 08.84"W	52.50
W4	N72° 36' 13.37"W	33.26
W5	N59° 03' 17.20"W	55.93
W6	S89° 22' 01.90"W	43.34
W7	S75° 17' 20.29"W	57.42
W8	N81° 14' 34.36"W	50.88
W9	S88° 01' 02.66"W	53.46
W10	N33° 36' 51.08"W	29.03
W11	N26° 37' 26.45"W	35.90
W12	N72° 30' 57.26"W	30.42
W13	N27° 50' 40.97"W	107.02
W14	N55° 09' 09.60"W	86.91
W15	N29° 57' 39.90"W	40.44
W16	N60° 20' 18.02"W	89.50
W17	S82° 01' 31.66"E	95.55
W18	S52° 05' 12.73"E	19.65
W19	S55° 16' 54.59"E	23.77
W20	N76° 15' 50.25"E	35.49
W21	N85° 43' 32.41"E	16.96
W22	S68° 01' 50.42"E	52.49

Proposed Wetland Impact: 1.16 ac

SURFACE LEGEND

- ASPHALT
- CONCRETE



SECTION A-A
 SCALE: HORIZ. 1"= 20'
 VERT. 1"= 2'

PROPOSED WETLANDS DISTURBANCE: 50,725 SF

SHEET D: PREFERRED SITE PLAN - 1.16 acre of wetland impacts

712 Village Road SW
 Suite 103
 Shalotte, NC 28470
 910.755.5872
 NC Firm License # C-0459
 mcgillassociates.com

PRELIMINARY

NO.	DATE	BY	DESCRIPTION

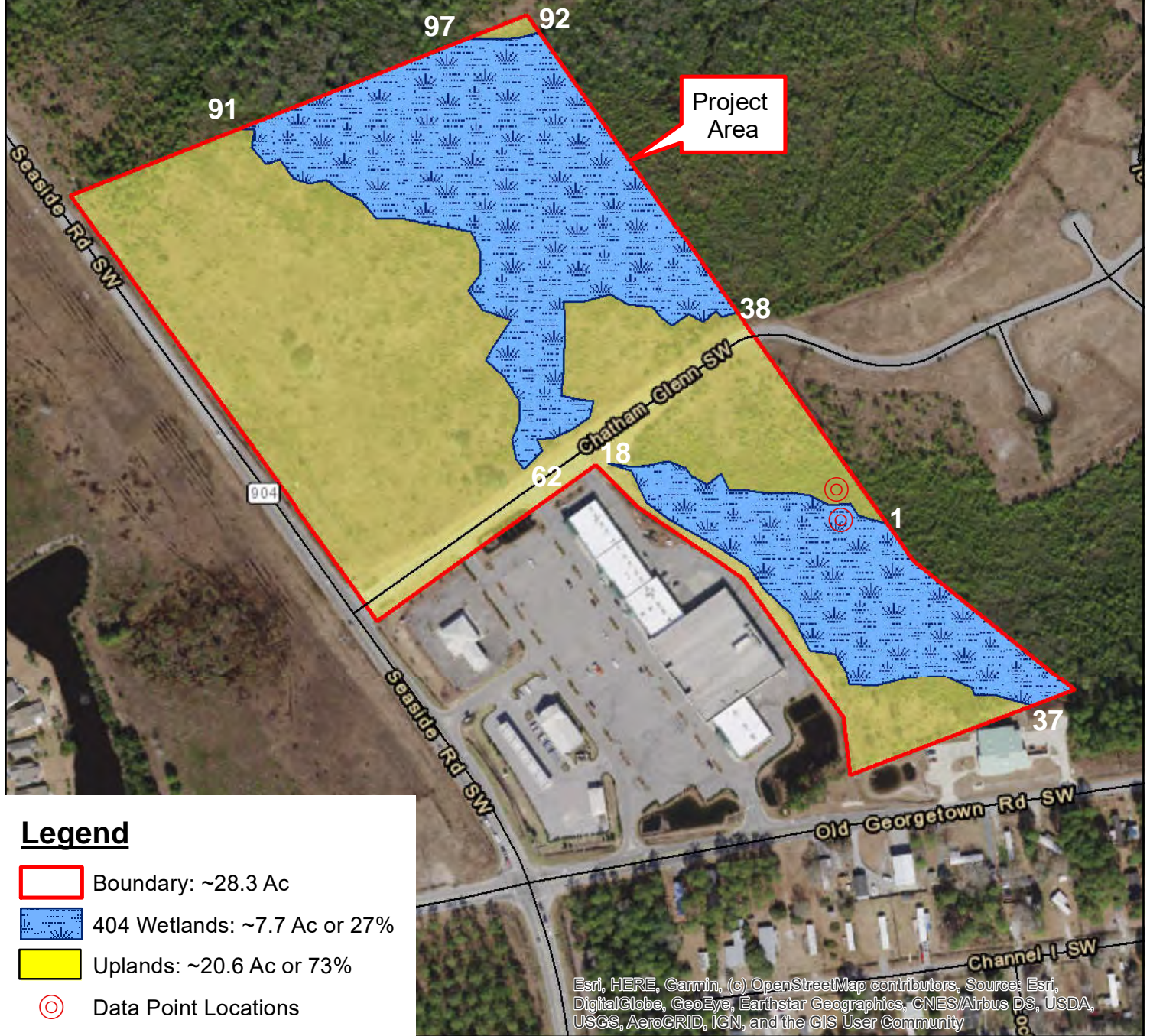
LAND DEVELOPMENT PLANS
 FOR
SUNSET BEACH FIRE STATION #2
 OFFICE & MAINTENANCE FACILITY
 SUNSET BEACH, NORTH CAROLINA

OFFICE MANAGER M. NORTON	DESIGNER T. MINTZ
PROJECT MANAGER M. NORTON	REVIEWER A. LAPINSKY

CONCEPTUAL SITE LAYOUT	
DATE FEBRUARY 2024	PROJECT # 21.07108
FUNDING # N/A	

SHEET
C-101

NOTE: All boundaries and distances are considered approximate. This represents a preliminary map prepared from field sketches. A survey of delineated areas, review, and approval by the US Army Corps of Engineers is recommended prior to specific site planning.



Legend

- Boundary: ~28.3 Ac
- 404 Wetlands: ~7.7 Ac or 27%
- Uplands: ~20.6 Ac or 73%
- Data Point Locations

Esri, HERE, Garmin, (c) OpenStreetMap contributors, Source: Esri, DigitalGlobe, GeoEye, Earthstar Geographics, CNES/Airbus DS, USDA, USGS, AeroGRID, IGN, and the GIS User Community

L:\WETLANDS\2019 WETLANDS FILES\LMG19.285 ---
 Sunset Commons, Dan Koeller\Maps
 Boundaries are approximate and not meant to be absolute.
 Map Source: 2016 GIS World Imagery Layer



Sunset Commons
 Brunswick County, NC

Map Date: April 2020
 LMG19.285

LMG
 LAND MANAGEMENT GROUP
 a DAVEY company
 3805 Wrightsville Avenue
 Wilmington, NC 28403
 (910) 452-0001

Figure 7
Section 404 Delineation - Preliminary Sketch